

Our DNA

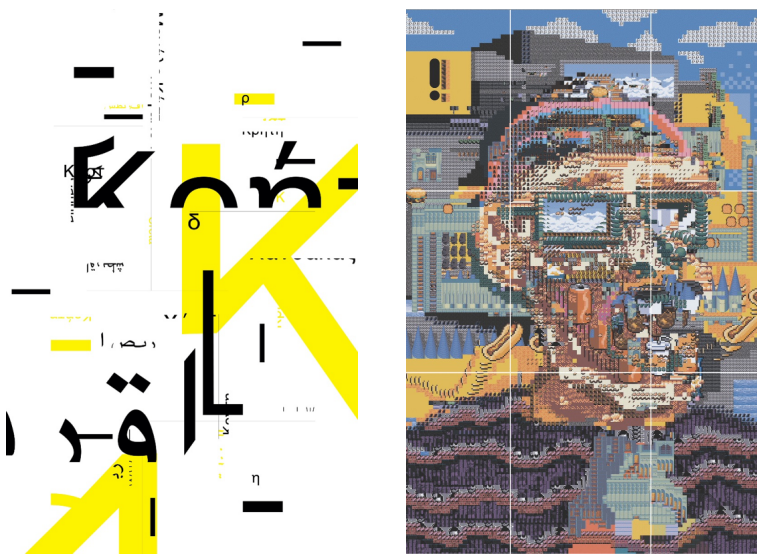
~ 5th Annual Juried Show ~

June 24th – July 25th, 2021
Opening Reception: Thursday, June 24th, 4-7pm



Artwork: *Tree Sap*, by Amanda Walker, watercolor and colored pencil

Our DNA, the 5th annual juried show at KLG, will showcase the work of over 50 artists. An opening reception is planned for **Thursday, June 24th, 4-7pm**, that will feature a live tap performance by [Alexis Robbins](#) at 5:30pm. Across the street, refreshments will also be available for sale in Westville's newest outdoor space, The Patio on Central Avenue.



Artworks: (Top Left) *Traces, Strata, Language*, by Joshua Unikel; (Top Right) *Tileset Head*, by Eben Kling and Aude Jomini.; (Bottom) *N*, by Eduardo Alvarez

For this year's juried show, the artists at KLG asked their colleagues to consider the following:

We humans are biological siblings, belonging to the genus Homo, and as Sapiens, the last surviving species of our genus. The last year spoke loudly of divisions and differences, but for this exhibit, we ask you as artists to focus on our 99.9% shared genome. Using any tools or languages, explore the belief systems and vocabularies of our family tree that touch on our common physical or metaphorical DNA, our essential humanity, the soul of the Sapien.

Having reviewed submissions from as far away as Cyprus, and as close as our own Elm City, the jury curated an exhibition showcasing the responses of 54 artists working in a wide range of media.



Artworks: (Top) *Circle Dance*, by Lauren Woods, Video Still; (Bottom Left) *WE (Cut From the Same Cloth) II*, by Marsha Borden, Soft Sculpture; (Bottom Right) *Haruspex*, by Daniel Eugene, polyester chiffon tapestry

Participating Artists: Eduardo Alvarez, Mark Battista, Robert Bienstock, Marsha Borden, Frank Bruckmann, Jill Butcher, William Butcher, Jeanette Compton, Penrhyn Cook, Rod Cook, Gabriella DiMaio, Anne Doris-Eisner, Jacqueline Allen Doucot, Tom Edwards, Daniel Eugene, Joe Fekieta, Brian Flinn, Kathryn Frederick, Kathryn Frund, Sean Patrick Gallagher, Jeffrey Gangwisch, Warda Geismar, Ellen Gordon, Dan Gries, Andrea Haas, Amy Hannum, Nina Sumarac Jablonsky, Sandra Jeknavorian, Aude Jomini, Ruth Kennedy, Earl Grenville Killeen, Eben Kling, Karl Kroeppler, Daudi Lazarre, Briah Luckey, Howard Margules, Christian Miller, Roy Money, David Ottenstein, Hilary Opperman, Donna Owens, Hank Paper, Tina Psoinos, Robert Schwarz, Sheri Schwarz, Anne Sheffield, Ada Monica Sperling, Geoffrey Stein, Lisa Toto, Joshua Unikel, Amanda Walker, Brian Williams, Marjorie Gillette Wolfe, Lauren Woods, Jessica Zamachaj

The following events, both in-person and virtual, are planned:

Opening Reception, Thursday, June 24th, 4-7pm: Come on over to KLG — in-person! — to get a closer look at the artworks in this unique exhibition. The reception will feature a live **tap performance** by [Alexis Robbins](#) at 5:30pm. Though masks will be required while inside the gallery, all guests will receive discount coupons to some of our delicious neighboring restaurants, and are invited to continue their art-inspired conversations over refreshments available for sale in Westville's newest outdoor space across the street, The Patio on Central Avenue. All beverage sales will support [ArtEcon Initiative's](#) arts and community programs -- such as this evening's tap performance!

SalonThrive, Sunday, July 11th, 5pm-6pm: *SalonThrive* is a virtual gathering place for art discussion and discovery on the zoom platform. With each new episode, all who log-on have an intimate opportunity to explore the work, ideas and influences of the featured artists. This month, we will begin with a video walk-through of the current exhibition, *Our DNA*, spotlighting several of the participating artists. This event is free and open to all, but RSVPs are required. Click [HERE](#) to register. You will only need to register once for the series. This series is presented in partnership with [ArtEcon Initiative](#).

Last Chance to See ...

Parallel Worlds, by Robert Bienstock - and - *L.A. Color and East Coast Weather*, by Hank Paper



Head on over to the gallery to see these fantastic exhibits in person!
Final days - Thursday 6/17 - Sunday 6/20

Journeying Forth
works by Frank Bruckmann, Kim Weston, Tom Edwards, and Sven Martson
May 1st - August 31st, 2021
on view now at
The Gallery at the Blake Hotel
curated by KLG
9 High Street, New Haven, 6th floor



The gallery is open Thursday-Friday, 11am-4pm; Saturday-Sunday, 10am-4pm, or by appointment. For the health and safety of all, when visiting the gallery, please adhere to the following: 1) wear a mask at all times; 2) sanitize your hands upon entry (available at the front desk); 3) keep at least 6ft distance between yourself and others; 4) if you're sick and exhibiting symptoms of any kind, please stay home and embark in a virtual experience — check out our online viewing rooms, and online shops, at [www.KehlerLiddellGallery.com](#).

[Click Here to Visit our Website for More Information](#)